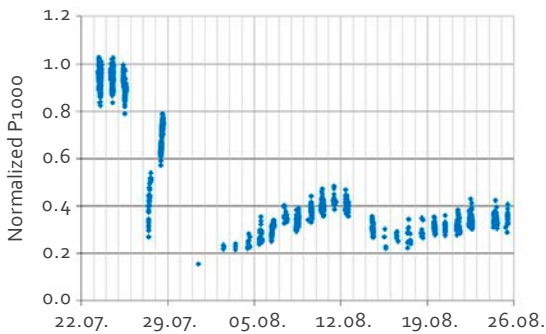
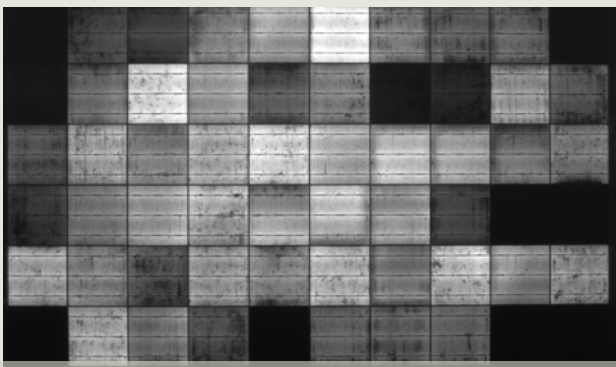




// PV power plant



// PID related power loss monitored at the ZSW testing facility



// EL image after IEC PID testing

PID (Potential Induced Degradation) is a possible risk for the long-term energy yield of any PV installation:

- // At present, PID is not covered by the IEC 61215 or 61646 type approval
- // PID might strike poly and mono c-Si but also thin-film modules
- // The PID effect is prone to a high system voltage and high leakage currents from the module surface into the cells

ZSW provides more than the IEC 62804 laboratory testing:

- // IEC 62804 PID testing and beyond
- // Outdoor performance monitoring of modules under high system voltage
- // PID testing by simulating different climate zones
- // Identify the best recovery strategy after PID problems for each module type:
 - grounding, or
 - positive potential over night, or
 - positive potential during day time

Contact

Claudia Brusdeylins
+49 (0)711 7870-278
claudia.brusdeylins@zsw-bw.de